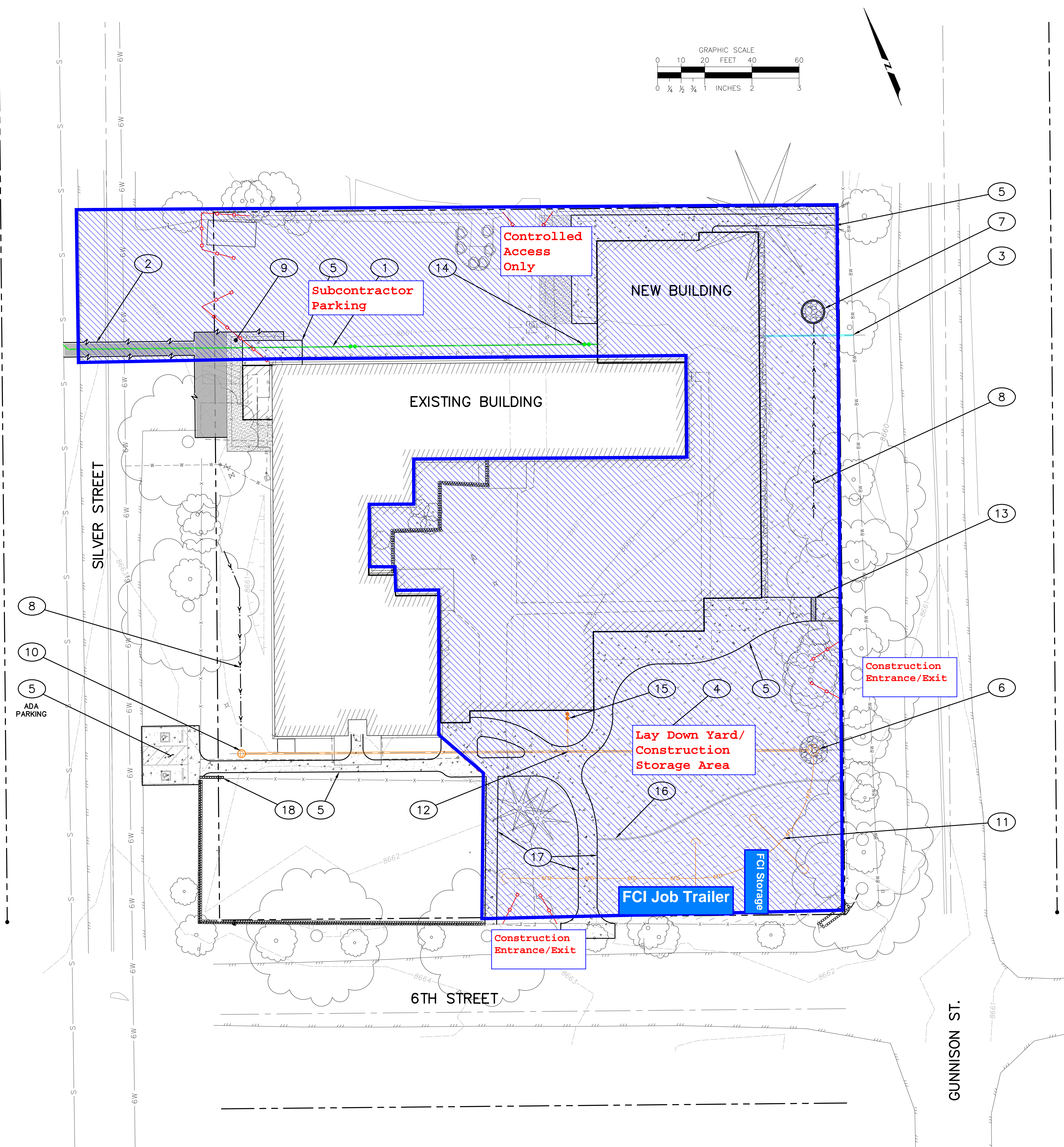


Lake City Community School Site Plan



GENERAL UTILITY NOTES:

- ALL UNDERGROUND UTILITIES AS LOCATED ON THE PLANS HAVE BEEN IDENTIFIED TO THE BEST AVAILABLE KNOWLEDGE, BUT NO GUARANTEES ARE EXTENDED. ALL LOCATIONS MUST BE FIELD-VERIFIED BY THE APPROPRIATE UTILITY AGENCY PRIOR TO BEGINNING CONSTRUCTION. CALL UNCC AT 1-800-922-1987 FOR LINE LOCATES.
- REMOVAL, RELOCATION, AND IMPROVEMENTS TO EXISTING UTILITIES SHALL BE CONSTRUCTED IN A MANNER AS TO MINIMIZE INTERRUPTION OF EXISTING SERVICES. THE CONTRACTOR SHALL COORDINATE ANY SERVICE DISCONNECTION WITH THE APPROPRIATE UTILITY AGENCY TO ALLOW ADEQUATE PREPARATION TIME.
- ALL DISINFECTION, HYDROSTATIC TESTING, INSPECTION, AND FLUSHING OF EXTERIOR WATER/FIRE LINE PIPING SHALL BE COORDINATED AND WITNESSED BY A REPRESENTATIVE FROM LAKE CITY.
- THE FIRE SUPPRESSION SYSTEM (I.E. KNOX BOX, PIV, FDC) TYPE AND LOCATIONS SHALL BE COMPATIBLE AND COORDINATED WITH THE LOCAL FIRE APPARATUS LAKE CITY.
- THE INSTALLATION OF PUBLIC WATER LINES SHALL BE IN ACCORDANCE WITH THE PROJECT SPECIFICATIONS AND THE APPROPRIATE REQUIREMENTS OF LAKE CITY.
- FIRE HYDRANTS SHOULD BE PLACED AT LEAST SIX FEET (6') FROM THE EDGE OF PUBLIC ROADWAYS. HYDRANT LOCATIONS SHALL BE CONFIRMED A REPRESENTATIVE OF LAKE CITY.
- ALL SAW CUTS OF EXISTING PAVEMENT/CONCRETE SURFACES SHALL BE FULL DEPTH AND STRAIGHT WITH A CLEAN EDGE. NO RIPPING OF PAVEMENTS SHALL BE PERMITTED OUTSIDE THE LIMITS OF THE TRENCH CUT. SURFACE AND EXCAVATED MATERIALS REMOVED SHALL BE HAULED AWAY FROM THE JOB SITE AND DISPOSED OF LEGALLY.
- ALL UTILITY EXCAVATIONS WITHIN STREET IMPROVEMENT AREAS SHALL BE BACK FILLED IN "B" LIFTS WITH APPROVED MATERIALS COMPACTED TO A MINIMUM OF 95% DENSITY OF THE MODIFIED PROCTOR METHOD (ASTM D-1557, ASHTO T-180).

GENERAL WATER NOTES:

- COORDINATE SHUTOFF, DISINFECTION, AND TESTING PROCEDURES WITH CITY PRIOR TO CONSTRUCTION.
- WATER MAINS SHALL BE C900 DR 18 PER TRENCHING DETAIL. INCLUDE THRUST BLOCKS, GATE VALVES WITH COVER COLLARS AS INDICATED. TIE INS TO MAIN SHALL BE CUT IN WITH DIP TEE AND LONG SLEEVE COUPLING.
- WATER SERVICE LINES SHALL BEAR THE N.S.F. SEAL OF APPROVAL FOR POTABLE WATER USE.
- ALL GATE VALVES SHALL BE RESILIENT SEAT GATE VALVES COMPLYING WITH AWWA C-509. VALVE BOXES SHALL BE CAST IRON CONSTRUCTION WITH ADJUSTABLE RISERS.
- ALL PIPE LINES SHALL BE BURIED PER DETAIL.
- ALL FITTINGS SHALL MEET THE APPROPRIATE AWWA SPECIFICATION.
- ALL LINES SHALL BE PRESSURE TESTED TO 200 PSI FOR A MINIMUM OF ONE HOUR. A LEAKAGE TEST SHALL BE PERFORMED FOR TWO HOURS TO A TEST PRESSURE OF 150 PSI. SEE SPECIFICATIONS FOR FURTHER INFORMATION.
- ALL PIPING, FITTINGS, AND APPURTENANCES FOR THE WATER SYSTEM SHALL BEAR THE N.S.F. SEAL OF APPROVAL FOR POTABLE WATER USE.
- ALL BENDS, TEES AND FITTINGS SHALL BE RESTRAINED WITH CONCRETE THRUST BLOCKS POURED AGAINST UNDISTURBED EARTH OR ROCK. THE MINIMUM FACE AREA FOR ALL THRUST BLOCKS SHALL BE AS SHOWN IN THE THRUST BLOCK TABLE.
- FIRE HYDRANT ASSEMBLIES ARE INCLUSIVE OF ALL INFRASTRUCTURE AND SPECIFICATIONS SHOWN IN THE DETAIL, THIS SET.

GENERAL SEWER NOTES:

- CONTRACTOR IS RESPONSIBLE FOR ACQUIRING REQUIRED APPLICABLE PERMITS FROM TOWN, DISTRICT, COUNTY, OR STATE.
- GRAVITY SEWER SERVICES SHALL BE A MINIMUM 4 INCH DIAMETER WITH PROPER FITTINGS.
- ALL TOPS OF CLEANOUTS SHALL BE PROPERLY ADJUSTED TO FINAL GRADE.
- ALL SEWER MAINS AND APPURTENANCES SHALL BE TESTED TO THE SATISFACTION OF THE ENGINEER AND IN ACCORDANCE WITH THE TOWN REQUIREMENTS.
- A COPY OF "AS-BUILT" PLANS SHALL BE SUBMITTED TO THE DISTRICT PRIOR TO FINAL ACCEPTANCE OF WORK.
- CONTRACTOR TO MAINTAIN CONTINUOUS SERVICE OF ACTIVE SEWER LINES. NOTIFY THE DISTRICT PRIOR TO COMMENCING CONSTRUCTION.
- INCLUDE GRAVITY TWO-WAY CLEANOUTS AT EACH EXIT OF BUILDING. 36" COVER MINIMUM AT EACH BUILDING EXIT.

GENERAL STORM DRAIN NOTES:

- ON-SITE STORM DRAIN SHALL BE SMOOTH WALL ADS N12 OR SDR-35 PIPE.
- ROOF DRAINS ENTERING STORM SYSTEM SHALL INCLUDE GRAVITY TWO-WAY CLEANOUTS AT EACH EXIT OF BUILDING. ALL DAYLIGHT EXITS SHALL INCLUDE A 5' DIAMETER RIPRAP PAD AND FLARED END SECTION (FES) TO MATCH PIPE TYPE. RIPRAP TO BE 18" DEEP, 9" D50 GRADATION. ROOF DRAINS EXIT BUILDINGS AT 24" COVER.

ABBREVIATION LEGEND:

ABC	AGGREGATE BASE COURSE	OAE	OR APPROVED EQUAL
AC	ASPHALT CEMENT PAVING	EW	EACH WAY
CDOT	CO DEPARTMENT OF TRANSPORTATION	OC	ON CENTER
DIP	DUCTILE IRON PIPE	LF	LINEAR FOOT
EC	EDGE OF CONCRETE	IE	INVERT ELEVATION
EG	EXISTING GROUND	TOR	TOP OF RETAINING ELEVATION
EP	EDGE OF PAVEMENT	BOR	BOTTOM OF RETAINING
ETW	EDGE OF TRAVELED WAY	CEN	CENTER OF RADIUS
FF	FINISHED FLOOR	C	CENTERLINE
FG	FINISHED GROUND	CO	CLEANOUT
FL	FLOW LINE	EOP	EDGE OF PAVEMENT
GB	GRADE BREAK	EOG	EDGE OF GRAVEL ROAD
GV	GATE VALVE	UG	UNDERGROUND
INV, IE	INVERT	P	PROPERTY LINE
MAX	MAXIMUM	LOG	LIP OF GUTTER
MIN	MINIMUM		
PC	POINT OF CURVATURE		
PRC	POINT OF REVERSE CURVE		
PT	POINT OF TANGENCY		
R	RADIUS, RIGHT OF C		
R/W	RIGHT OF WAY		
SOWK	SIDEWALK		
SSMH	SANITARY SEWER MANHOLE		
SOG	SLAB ON GRADE		
TB	THRUST BLOCK		
TBOC	TOP BACK OF CURB		
TFOC	TOP FACE OF CURB		
TOW	TOP OF WALL		
TYP	TYPICAL		
VIF	VERIFY IN FIELD		

CONSTRUCTION KEYNOTES:

- CONSTRUCT SANITARY SEWER SERVICE PER PLAN AND PROFILE (C201)
- SAWCUT, REMOVE AND REPLACE ASPHALT PAVEMENT
- CONSTRUCT WATER SERVICE PER PLAN & PROFILE (C201)
- CONSTRUCT STORM DRAIN PER PLAN & PROFILE (C202)
- SITE HARDSCAPE
- DRYWELL C
- DRYWELL A
- DRAINAGE SWALE
- CRUSHER FINES SURFACE
- 30" STORM INLET
- 6" FRENCH DRAIN BENEATH PLAYGROUND SURFACE
- ROOF DRAIN
- SIDEWALK CHASE
- TWO WAY SEWER CLEANOUT
- TWO WAY STORM CLEANOUT
- BARRIER CURB
- THICKENED EDGE TO BORDER PLAYGROUND SURFACES
- EXTENDED BARRIER CURB, 10' LENGTH

19 SOUTH TEJON ST., SUITE 300
 COLORADO SPRINGS, CO 80903
 TELE: 719-471-7566
 FAX: 719-471-1174
 www.raarchitects.com

Lake City Community School
 Hinsdale County School District RE-1
 614 Silver St.
 Lake City, CO 81235

NOT FOR CONSTRUCTION

© COPYRIGHT RSI, INC.
 SHEET TITLE
SITE IMPROVEMENT PLAN
 SHEET NUMBER
18040.00
 DATE
01-16-2019
 REVISIONS
 DRAWN BY: **RSR/TWE**
 CHECKED BY: **TWE**
 DESIGNED FOR:
DESIGN DEVELOPMENT
 SHEET NO.
C200